

# Tomahawk® 375 Air

## Processes

Plasma Cutting

## For These Materials

Mild Steel

Brass

Stainless Steel

Copper

Aluminum

## Product Number

K2806-1

## Input Power

208/230/1/60

## Rated Output Current/Duty Cycle

13A/85.2V/100%

18A/87.2V/60%

25A/90V/35%

## Output Range

10-25A

## Air Pressure Required

80-110psi (6-7.5 Bar)

## Air Flow Rate

70psi @ 125-200SCFH  
(5 Bar @ 80 Liters/min)

## Weight/Dimensions (H x W x D)

40 lbs. (18 kg)

15.2 x 8.5 x 18.9 in.  
(385 x 215 x 480 mm)

See back for complete specs

## Plasma Cutting - Anywhere, Anytime

The Tomahawk® 375 Air plasma cutting system arrives ready to go for fast and precise cutting. With the 375 Air, forget the grinder – simply pick up the torch and cut in seconds.

### FEATURES

- ▶ **Ultimate Portability** – Internal air compressor enables operation in environments where external compressed air is not available.
- ▶ **Continuous Output Control** – Focus the arc for different material thickness.
- ▶ **Touch Start system** – Reliable plasma arc initiation without high frequency.
- ▶ **Rapid Arc Restrike** – Fast cutting through gaps, even expanded metal.
- ▶ **Front Panel Purge Control** – Makes it easy to set the air flow rate without initiating the plasma arc.
- ▶ **Cool Operation, Long Consumable Life** – New electrode and nozzle design save you money in the long run.
- ▶ **Added Safety** – Our Parts-in-Place system detects correct installation of consumables and torch.
- ▶ **Engine Drive Compatible** – Select a Lincoln Electric Ranger® or Vantage® to power your Tomahawk® in remote locations.

### APPLICATIONS

- ▶ On site maintenance
- ▶ Small construction sites
- ▶ Air ducting installation (HVAC)
- ▶ Demolition work
- ▶ Rental

Can be used with either external air or internal compressor.



### WHAT'S INCLUDED

#### K2806-1 Includes:

- ▶ Internal air compressor (external air connection also standard)
- ▶ Lincoln Electric LC25 Torch with 10 ft. (3 m) cable
- ▶ Air regulator and pressure gauge
- ▶ Internal water separator
- ▶ Work clamp and cable
- ▶ Spare consumables
- ▶ Shoulder strap
- ▶ Input power cord

### CUT PERFORMANCE

Recommended	Maximum	Severance
5/16 in (7.9 mm)	3/8 in (0.375 in) (9.5 mm)	1/2 in (12.7 mm)
Rated Cut @ 22 ipm (0.56 m/min)	Maximum Cut @ 14 ipm (0.36 m/min)	Sever Cut @ 5 ipm (0.13 m/min)

#### INPUT



#### OUTPUT



Two Year Extended  
Warranty Available in  
the U.S.A. and Canada

\* 3 year warranty on machine  
1 year on torch

IP21S



Web Update 05/12

Publication E11.100 | Issue Date 12/10  
© Lincoln Global, Inc. All Rights Reserved.

## THE LINCOLN ELECTRIC COMPANY

22801 St. Clair Avenue • Cleveland, OH • 44117-1199 • U.S.A.  
PH: +1.216-481-8100 • www.lincolnelectric.com

**LINCOLN**  
**ELECTRIC**  
THE WELDING EXPERTS®

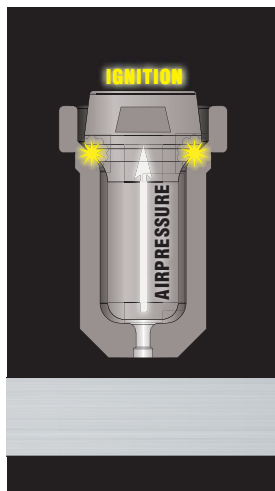
## KEY CONTROLS

- 1 Output and Air Purge Control
- 2 Output Status LED Indicator (Red)
- 3 Power On/Off LED Indicator (Green)
- 4 Thermal Status LED Indicator (Yellow)
- 5 Internal / External Compressor Switch
- 6 Air Pressure Gauge
- 7 Air Pressure Adjustment
- 8 Workpiece Cable Connection
- 9 Internal Compressor Air Filter
- 10 Plasma Torch - Non-Detachable
- 11 On/Off Power Switch
- 12 Air Inlet (for External Compressed Air only)
- 13 Input Cord
- 14 Cooling Fan



## LINCOLN LC TORCH HEAD DESIGN

### TORCH DESIGN FOR OPTIMAL STARTING AND PERFORMANCE

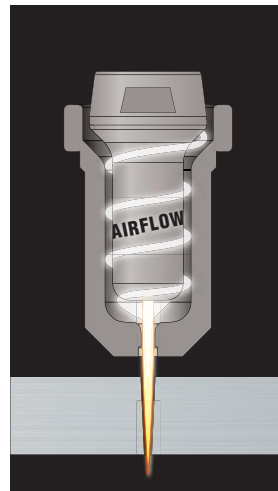


#### Starting

- Air pressure pushes the electrode back
- Ignition takes place on the 'shoulder'
- No damage to the tip



- Extended consumable lifetime
- Consistent starting without High Frequency



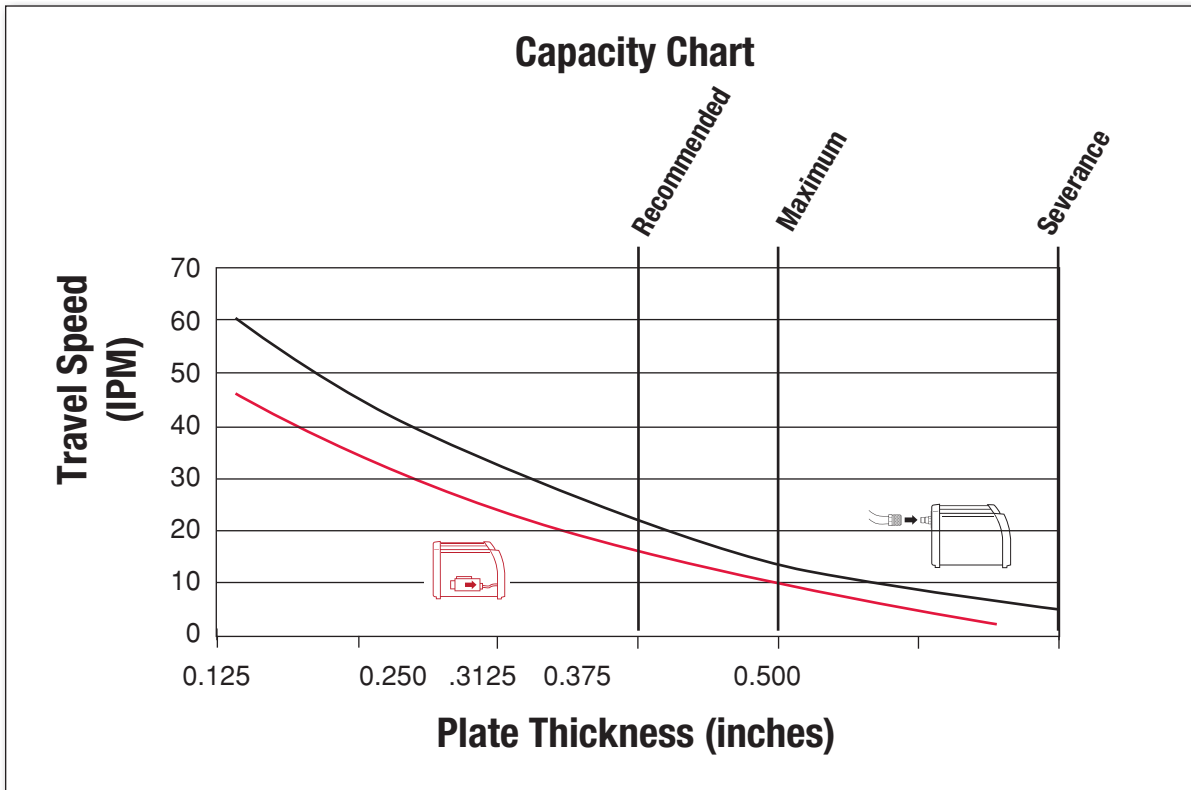
#### Performance

- Enhanced swirling airflow
- Improved radius and electrode/nozzle design



- More concentrated arc
- Faster cutting speeds
- Greater thickness cutting capacity

**CUTTING PERFORMANCE MILD STEEL**



Aluminum cutting speeds are typically 10-20% faster than mild steel.  
 Stainless steel cutting speeds are typically 10-20% slower than mild steel.

**COMPATIBLE ENGINE DRIVES <sup>(1)</sup>**



<sup>(1)</sup> When run in the high idle mode.

The Tomahawk® 375 Air can be operated on engine driven generators as long as the 230 volt auxiliary meets the following conditions.

- The AC Waveform peak voltage is below 400 volts.
- The AC waveform frequency is between 55 and 65 Hz.
- The RMS voltage of the AC waveform is always greater than 208VAC.

## RECOMMENDED ACCESSORIES



### GENERAL OPTIONS

**Plasma Circle Cutting Guide Kit**  
For cutting circles from 3-33 in. (77-838 mm) in diameter. Works with all Lincoln LC series plasma torches.  
**Order K2886-1**



**Canvas Accessory Bag**  
Canvas bag available to store your welding accessories with convenient carrying handle and snaps to attach to your equipment.  
**Order K3071-1**



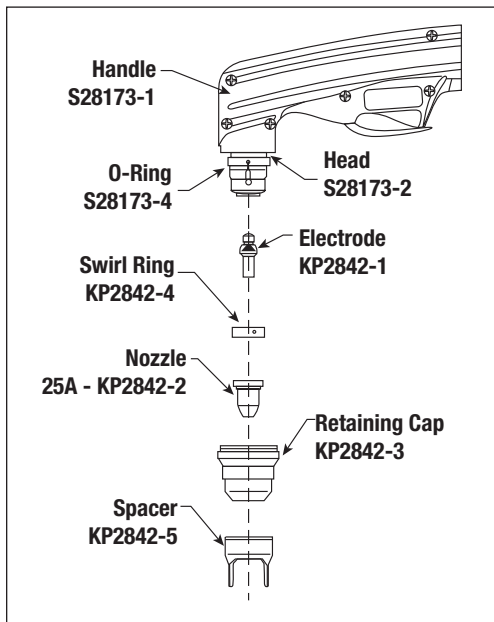
**Lincoln Electric LC25 Replacement Torch**  
Includes 10 ft. (3 m) torch cable and one set of all required torch expendable parts.  
**Order K2846-1**



**Small Canvas Cover**  
Protect your Tomahawk® when not in use. Made from red canvas that is flame retardant, mildew resistant and water repellent.  
**Order K2377-1**

## REPLACEMENT TORCH CONSUMABLES

### Lincoln Electric LC25 Parts



### TOMAHAWK® 375 AIR TORCH CONSUMABLES

Product Number	Description
KP2842-1	Electrode
KP2842-2	Nozzle
KP2842-3	Retaining Cap
KP2842-4	Swirl Ring
KP2842-5	Spacer

### Consumable Wear

- It is normal for the electrode and nozzle to wear during operation.
- Electrodes should typically be replaced when erosion reaches 0.025 in. (0.65 mm).
- A green and erratic arc will indicate end of electrode life. The electrode should be immediately replaced.
- It is recommended that the KP2842-1 Electrode and KP2842-2 Nozzle (25A) be replaced as a complete set.



## PRODUCT SPECIFICATIONS

Product Name	Product Number	Input Power	Rated Output Current/Voltage/Duty Cycle	Input Current @ Rated Output	Pilot Current	Output Range	Air Pressure Required	Air Flow Rate Required	Dimensions H x W x D in. (mm)	Net Weight Without Torch lbs (kg)
Tomahawk® 375 Air	K2806-1	208/230/1/60	13A/85.2V/100% 18A/87.2V/60% 25A/90V/35%	21.7A (max)	17A	10-25A	80-110psi (6-7.5 Bar)	70psi @ 125-200SCFH  5 Bar @ 80 Liters/min.	15.2 (385) 8.5 (215) 18.9 (480)	40 (18)

## CUSTOMER ASSISTANCE POLICY

The business of The Lincoln Electric Company is manufacturing and selling high quality welding equipment, consumables, and cutting equipment. Our challenge is to meet the needs of our customers and to exceed their expectations. On occasion, purchasers may ask Lincoln Electric for information or advice about their use of our products. Our employees respond to inquiries to the best of their ability based on information provided to them by the customers and the knowledge they may have concerning the application. Our employees, however, are not in a position to verify the information provided or to evaluate the engineering requirements for the particular weldment. Accordingly, Lincoln Electric does not warrant or guarantee or assume any liability with respect to such information or advice. Moreover, the provision of such information or advice does not create, expand, or alter any warranty on our products. Any express or implied warranty that might arise from the information or advice, including any implied warranty of merchantability or any warranty of fitness for any customers' particular purpose is specifically disclaimed.

Lincoln Electric is a responsive manufacturer, but the selection and use of specific products sold by Lincoln Electric is solely within the control of, and remains the sole responsibility of the customer. Many variables beyond the control of Lincoln Electric affect the results obtained in applying these types of fabrication methods and service requirements.

Subject to Change – This information is accurate to the best of our knowledge at the time of printing. Please refer to [www.lincolnelectric.com](http://www.lincolnelectric.com) for any updated information.